

Amazon Echo

How to set Amazon Echo to control your Smart Wireless Door Opener?

Before using Echo to control your Smart Wireless Door Opener, make sure you meet the following conditions.

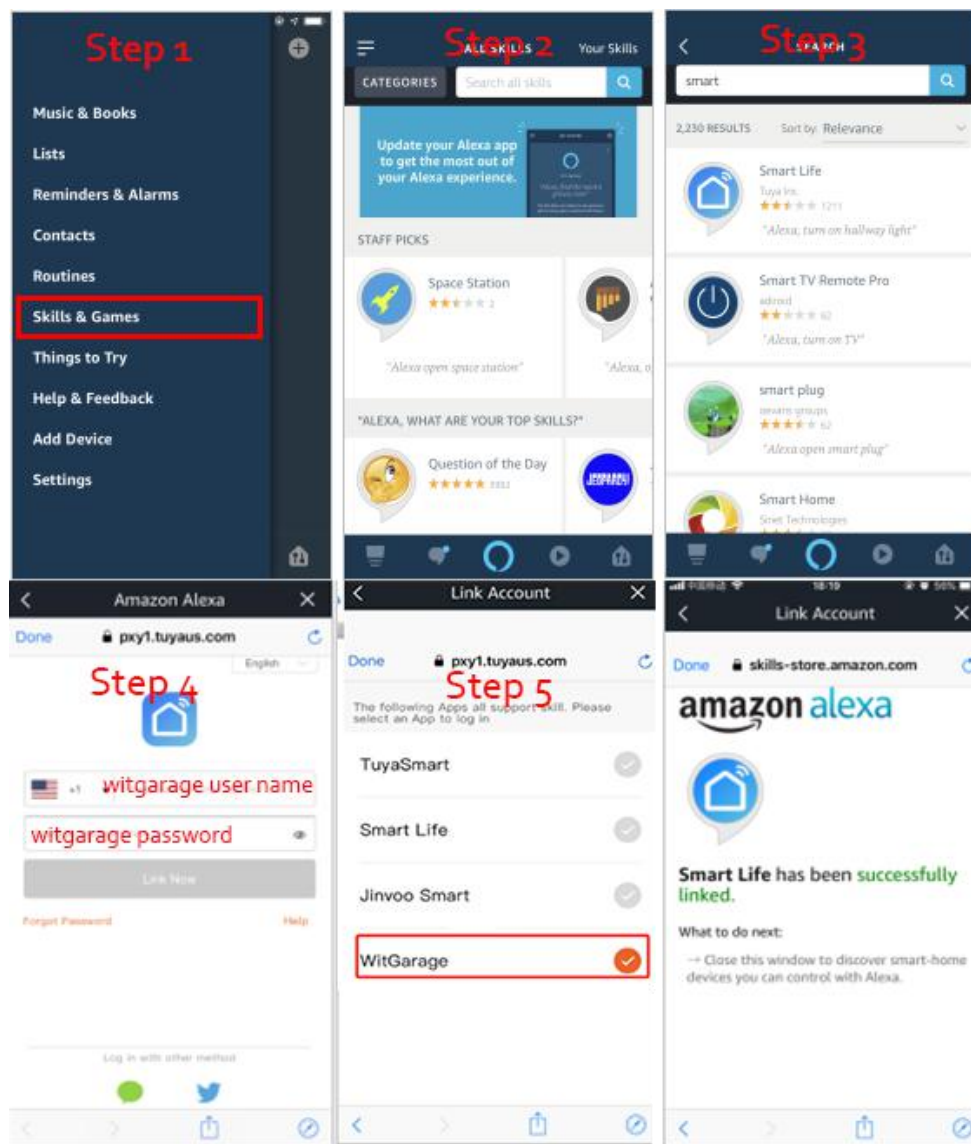
- 1) An Echo device, including Echo, Echo Tap, or Echo Dot.
- 2) An Amazon account.
- 3) Witgarage app and a related account.

Make sure you have added our smart Wi-Fi door opener to witgarage application and you have added an alexa device to the amazon alexa application.

1. Launch amazon alexa app and login with your account;
2. Search "smart life" skill, enable this skill, and link your witgarage account with amazon alexa app. (If you are using smart life app to control other smart devices, please see following part);
3. Voice commands

"Alexa, Turn on (**witgarage**)" OR "Alexa, Turn on (**witgarage**)"

Note: "witgarage" is the device name.



alexa settings

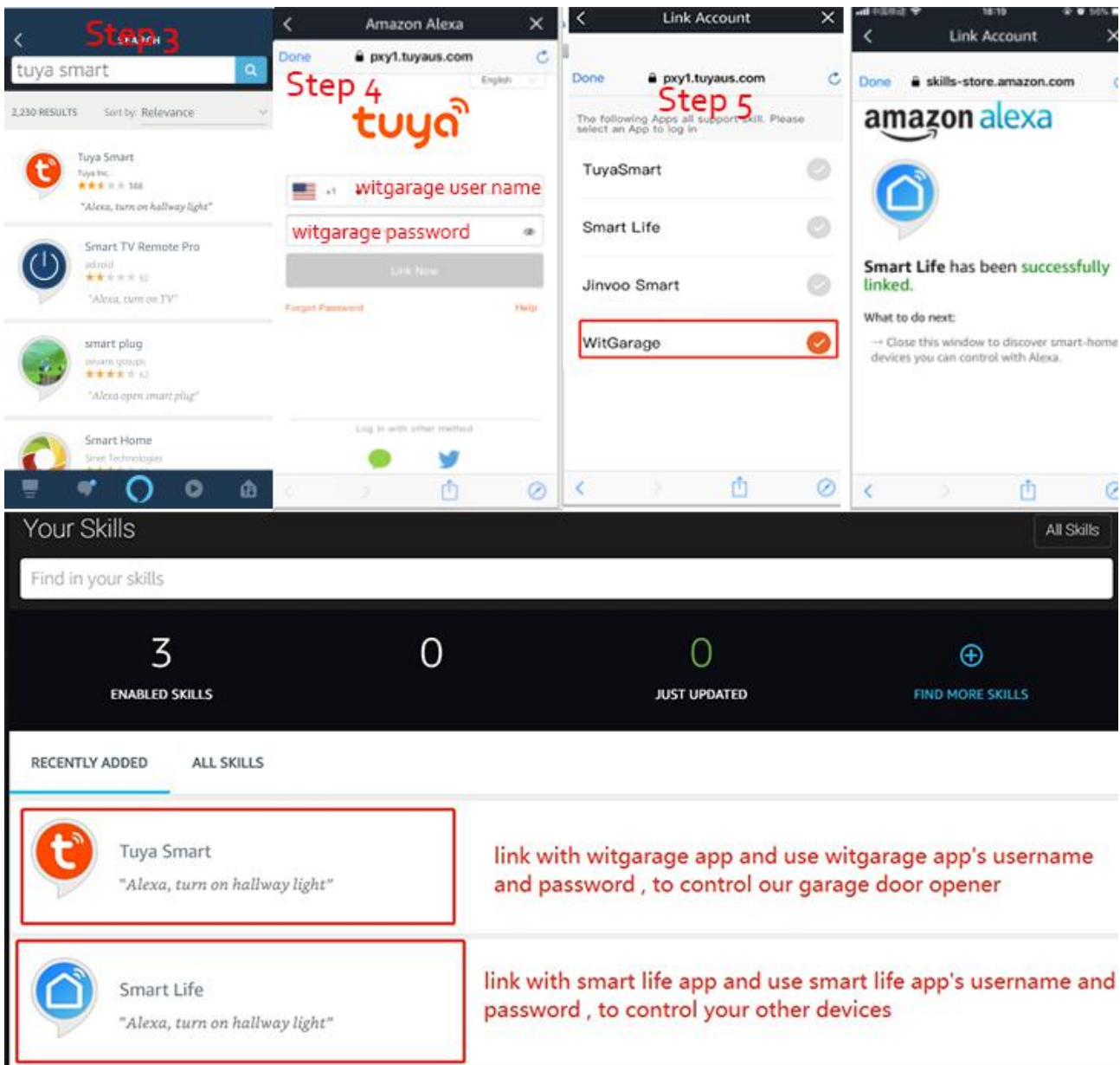
Note: Please read the following information, it is very important.

1) Please check carefully about the skill name and icon at step 3 as there are so many skills with similar name;

2) Please check carefully about the username and password in step 4 as our device support both "witgarage" app and "smart life" app. ***In Step 4, if you are using the WitGarage app, you still need to select Smart Life in Amazon Alexa app but then enter your WitGarage userid/password and NOT a Smart Life userid/password.***

3) Please check carefully about the app selection in step 5 with the same reason. If you are using "witgarage" app and enter the "witgarage" app's userid/password in step 5, you have to select "witgarage".

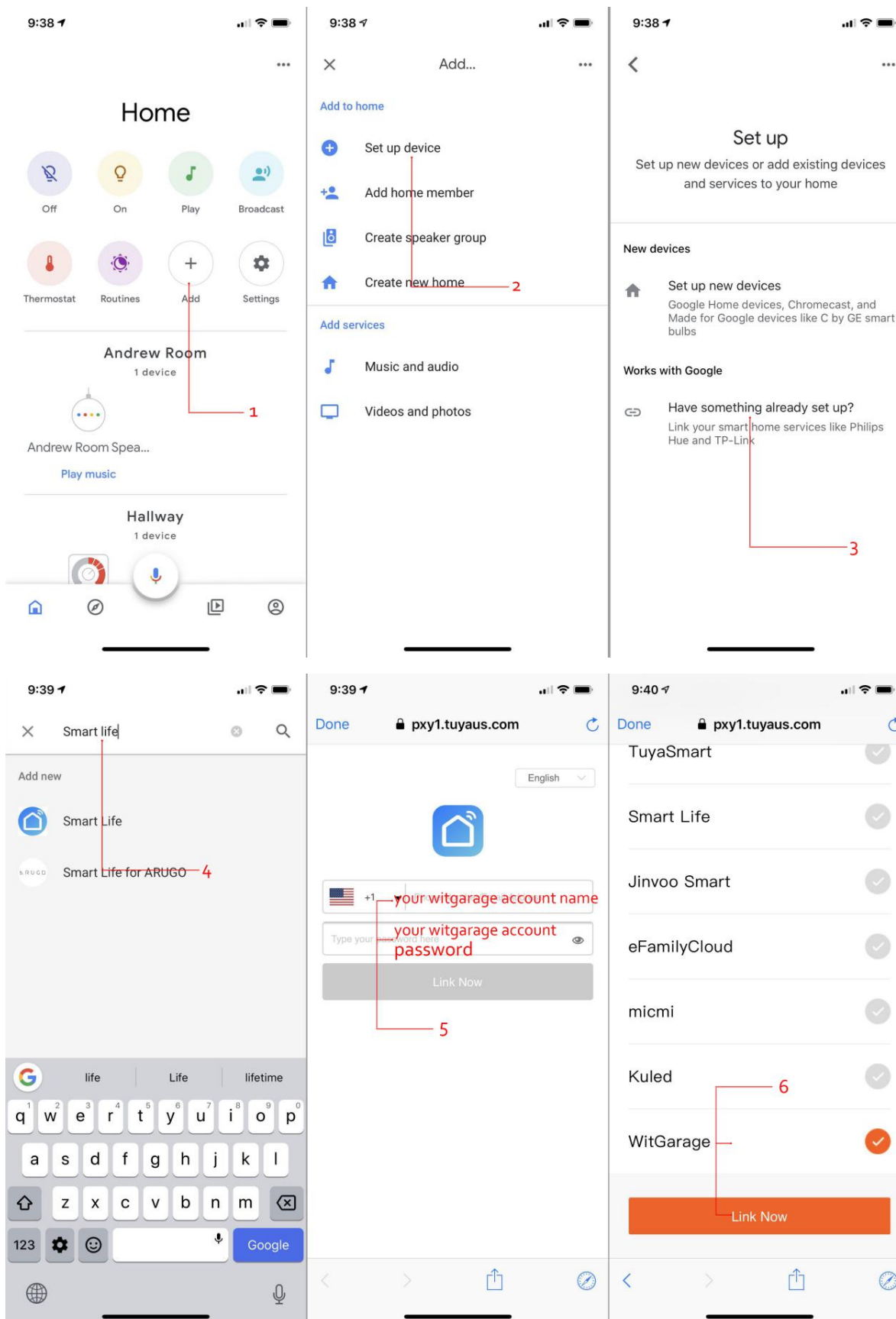
4) If you are using "smart life" app to control other smart home devices, we support another skill named "Tuya smart", please link our witgarage app with it . Please see the following figure. ***In step 3, search "tuya smart" skill, in step 4, enter witgarage app's username and password, in step 5, select witgarage.***



Google home

How to set google home?

Please see the following figures:



Voice command:

“Ok Google, open (WitGarage)” OR “Ok Google, close (WitGarage)”

If the voice command above doesn't work, please try

“Ok Google, turn on (WitGarage)” OR “Ok Google, turn off (WitGarage)”

Note: “witgarage” is the device name.

Note: Please read the following information, it is very important.

- 1) Please check carefully about the skill name and icon in step 4 as there are so many skills with similar name;
- 2) Please check carefully about the username and password in step 5 as our device support both “witgarage” app and “smart life” app. ***In Step 5, if you are using the WitGarage app, you still need to select Smart Life in Google Home but then enter your WitGarage userid/password and NOT a Smart Life userid/password.***
- 3) Please check carefully about the app selection in step 6 with the same reason.If you are using “witgarage” app and input the “witgarage” app’s userid/password in step 5, you have to select “witgarage”.
- 4) If you are using “smart life” app to control other smart home devices, we support another skill named “Tuya smart”. ***In step 4, please search “Tuya smart”. In step 5, enter witgarage app’s username and password. In step 6, select witgarage.***

