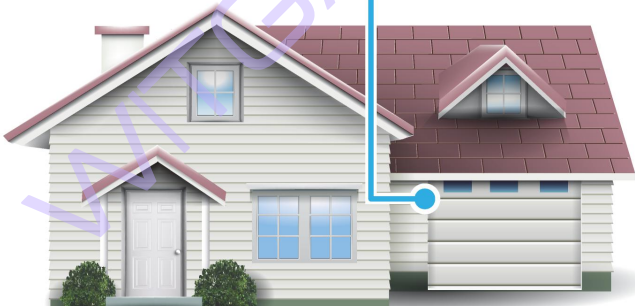


GOOGLE HOME SETUP GUIDE



WITGARAGE

Opening, closing and monitoring your garage door whenever and wherever.





The integration of WitGarage and Google Assistant Action allows voice command to control the door status. Following steps describe how to setup Google Home for WitGarage.

Warning: *The following steps are for reference only. The operations may be changed by Google Home app. The newest operation guide will be updated on our website. <http://witgarage.com/support/>*

1) **What you need to get started**

Before using Google Home to control your devices, make sure you meet the following conditions.

- ✓ A Google Home device, or Android phone with Google Assistant.
- ✓ Latest Google Home app.
- ✓ Latest Google app (Android only)
- ✓ A Google account.
- ✓ The device display language must be set to English US.
- ✓ Witgarage app and a related account.
- ✓ Witgarage device.

2) **Add devices in Witgarage app (Refer to App Instruction)**

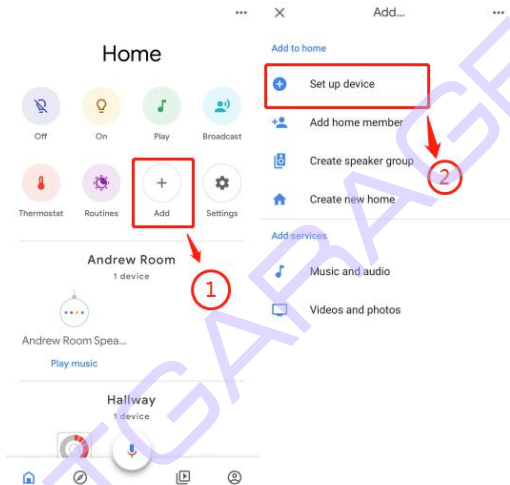
You can skip this part if you've already add a device to your Witgarage account, and in the meantime the device's name is easily recognized.

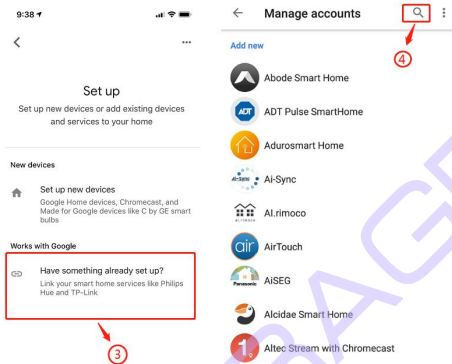
3) **Set up Google Home and configure in Home Control;**

Configuration needs Google Home app. Search "Google Home" in App

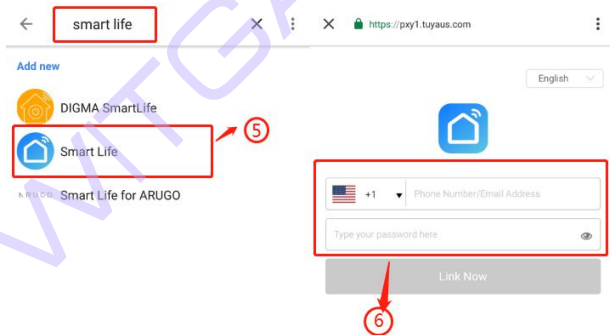
Store or Google Play to install the app.

4) Link Smart Life account in Home Control, see following figures:





Type the keywords “ Smart life” to search like below:



Select your region, input the account name and password of

WitGarage app, and Tap “Link Now”.After you assign rooms for devices, your devices will be listed in the Home Control page.

5) Please check the device name

before you use Google Home to control the garage. You can also rename it (see the right figure).

Possible Google Voice Command

Voice Command:

“ok Google, open (WitGarage)”

“ok Google, close (WitGarage)”

If the voice command doesn't work, maybe you can try:

“ok Google, turn on (WitGarage)”

“ok Google, turn off (WitGarage)”

